

# Drawing Portfolio

Elisha Torres

03YY6501

2023



# Work 1

Sustained Investigation

Height: 60.5

Width: 36

Materials:

Charcoal and soft pastels on paper.

Process(es):

Illustrated the intensity of the lights and shadows to portray the exposure of her skin as horrific.



## Work 2

Sustained Investigation

Height: 74

Width: 36

Materials: Acrylic paint on canvas.

Process(es):

In contrast to my earlier work, I utilized warm colors to emphasize the power in my emotions.



## Work 3

Sustained Investigation

Height: 48

Width: 36

Materials:

Oil and acrylic paint on canvas.

Process(es):

Layers of acrylic and oil paint built the cold and lonely atmosphere to complement the curled body.





## Work 4

Sustained Investigation

Height: 48

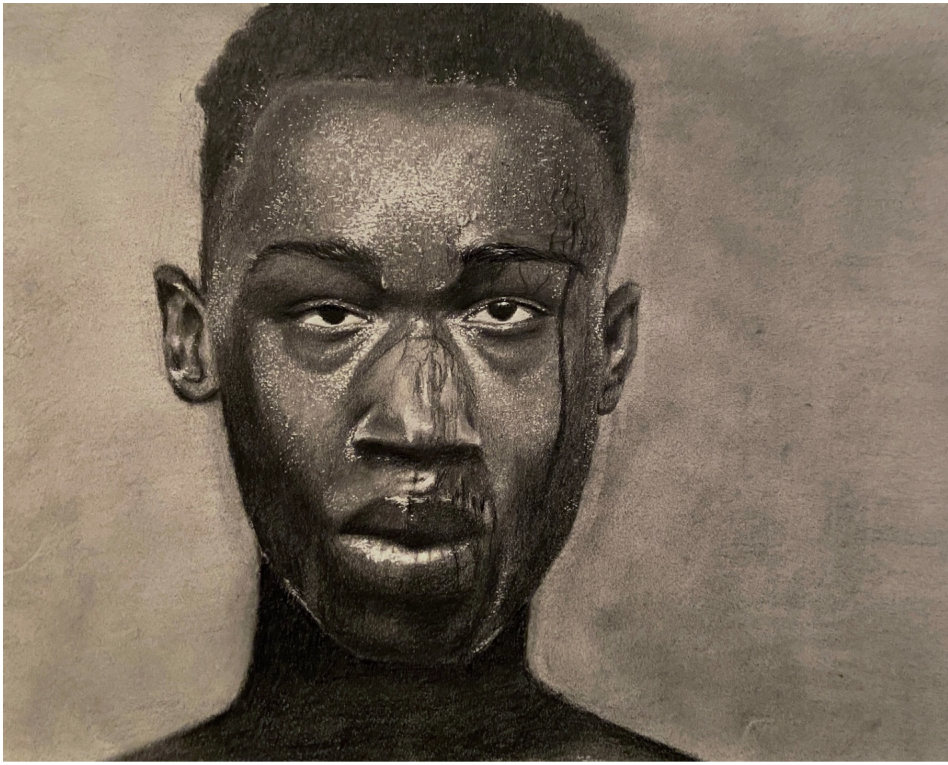
Width: 36

Materials:

Oil paint and acrylic paint on canvas.

Process(es):

I used additional smaller paintings as X-ray inserts to reveal the inside of the body.



## Work 5

Sustained Investigation

Height: 9

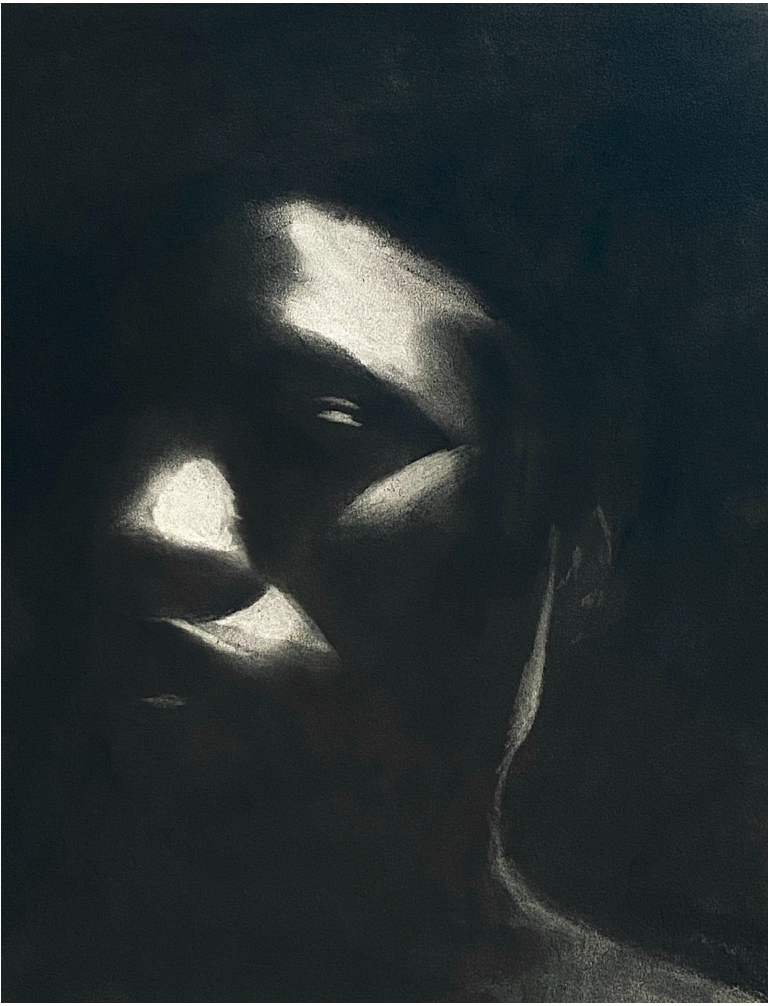
Width: 16

Materials:

Graphite pencils, black colored pencils,  
and white gel pen on paper.

Process(es):

Light layers built the mid-tones and  
heavier layers in the darkest areas.



## Work 6

Sustained Investigation

Height: 18

Width: 16

Materials: Charcoal on paper.

Process(es):

I covered the paper in charcoal then redefined edges of shadows and subtle creases with an eraser.



## Work 7

Sustained Investigation

Height: 11

Width: 8

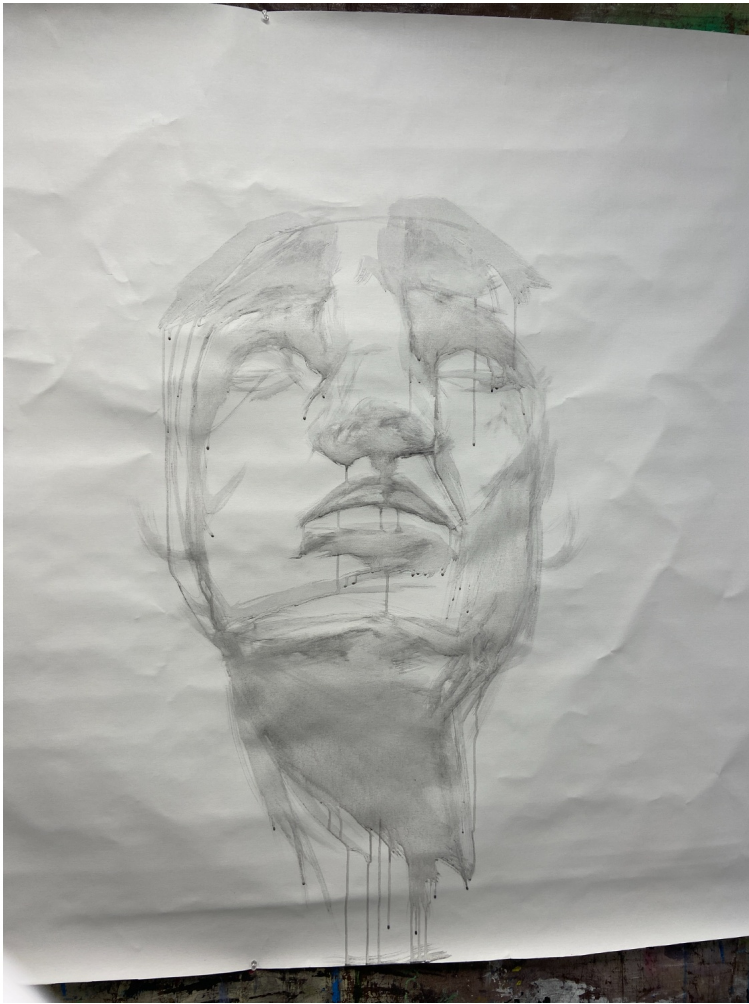
Materials:

Charcoal and graphite on paper.

Process(es):

Filled in the hair and the stark shadows on the face and emphasized the highlights with an eraser.





## Work 8

Sustained Investigation

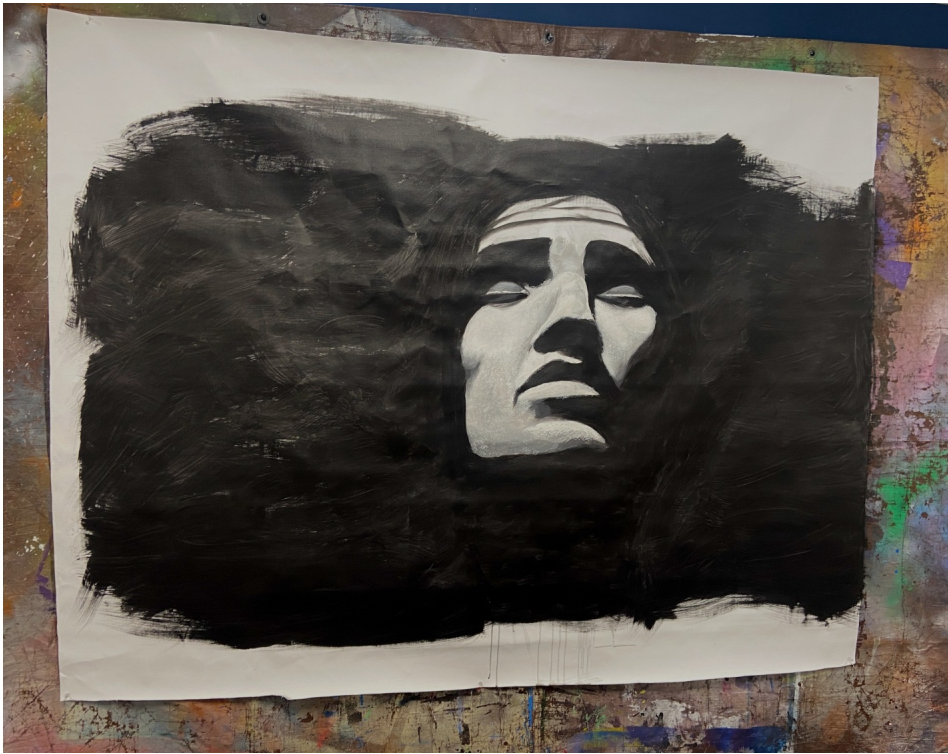
Height: 51

Width: 71

Materials: Acrylic paint on canvas.

Process(es):

I sketched out the general features of the face with diluted paint to allow room for change.



## Work 9

Sustained Investigation

Height: 51

Width: 71

Materials: Acrylic paint on canvas.

Process(es):

I switched over to straight black paint to cover the empty space and prominent shadows.





## Work 10

Sustained Investigation

Height: 51

Width: 71

Materials:

Acrylic paint and felt-tip pens on canvas.

Process(es):

I started to add fine details to achieve a seamless transition from dark to light.



## Work 11

Sustained Investigation

Height: 51

Width: 71.5

Materials:

Acrylic paint, acrylic gloss medium, markers, and pens on canvas.

Process(es):

Began with a light paint sketch and then switched to felt-tip pens to pull out the finer details.



## Work 12

Sustained Investigation

Height: 16

Width: 15

Materials:

Charcoal, graphite, paint, and gel pen  
on paper.

Process(es):

Varying layers of graphite and charcoal  
build the mid-tones and stark contrast  
of the hair and body.





## Work 13

Sustained Investigation

Height: N/A

Width: N/A

Materials: Procreate (software)

Process(es):

A large brush was used for the general shapes of the body and smaller brushes for the details.



## Work 14

Sustained Investigation

Height: N/A

Width: N/A

Materials: Procreate (software)

Process(es):

Used messy sketches and shapes to build layers of the background against the detailed foreground.



## Work 15

Sustained Investigation

Height: N/A

Width: N/A

Materials: Procreate (software)

Process(es):

Started with a light sketch and slowly worked my way up to intense shadows and highlights.



# Written Evidence

## Sustained Investigation

Identify the question(s) or inquiry that guided your sustained investigation.

Response:

My initial question addressed my curiosity about existence and consciousness. I quickly understood that existence is defined by the collection of marks on both the physical and intangible world.

Consciousness on the other hand was complex to uncover, as it exposed the deepest parts of my mind. However, it taught me to be hungry for personal knowledge and face the memories I subconsciously ignored in fear of vulnerability. These memories relate to struggles around queerness, spirituality, and mental health which exposed my true need to know myself inwardly instead of by external means.

Describe how your sustained investigation shows evidence of practice, experimentation, and revision guided by your question(s) or inquiry.

Response:

This art process encouraged me to expand and project my creative skills and concepts onto larger canvases such as works 1, 2, and 11 as I explored my experience with religion and mental illness. I have pushed myself to experiment with software that allows me a new creative process and perspective as shown in works 3, 4, 13, 14, and 15 where I explored queerness. Through this, I persisted in creative risk-taking despite my perfectionism and fear of failure. With consistent drawing and active research in the creative spheres, I have learned to trust my artistic abilities and decisions.



# Work 1

Selected Works

Height: 51

Width: 70.5

Idea(s):

Anticipation is displayed on the face to symbolize the fear and desire for change.

Materials:

Acrylic paint, acrylic gloss medium, markers, and pens on canvas.

Process(es):

Began with a light paint sketch and then switched to felt-tip pens to pull out the finer details.



## Work 2

Selected Works

Height: 16

Width: 15

Idea(s):

A portrayal of a woman who is comfortable in her character and essence through her hair and gaze.

Materials:

Charcoal, graphite, paint, and gel pen on paper.

Process(es):

Varying layers of graphite and charcoal build the mid-tones and stark contrast of the hair and body.



## Work 3

Selected Works

Height: 60.5

Width: 36

Idea(s):

This speaks to the intertwining issue of perfectionism and restriction as a queer woman in my church

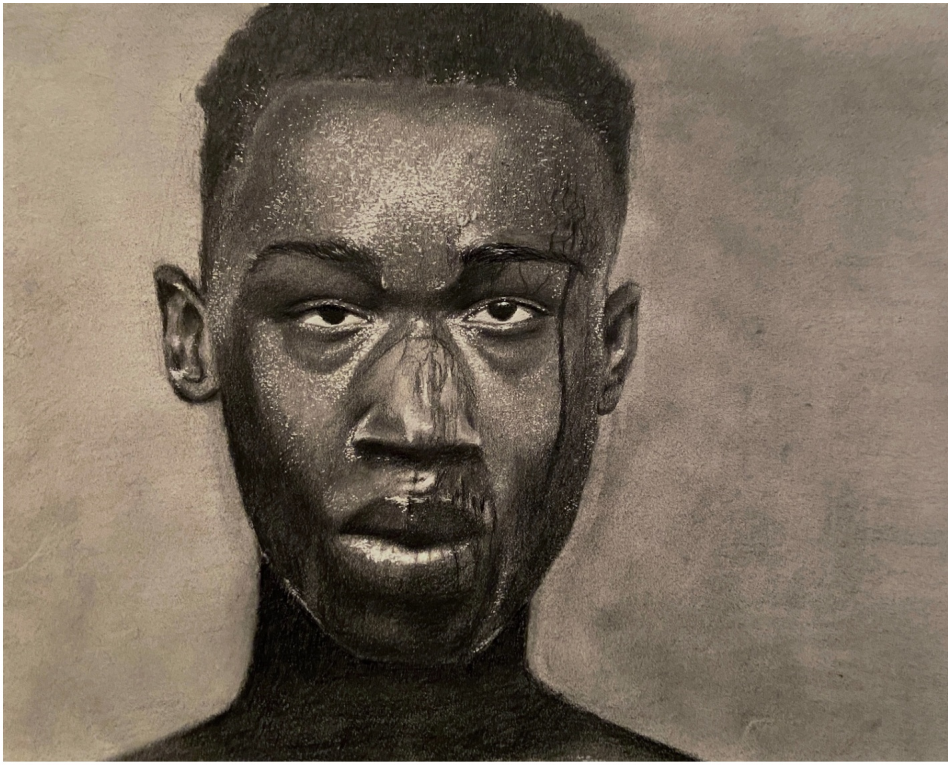
Materials:

Charcoal and soft pastels on paper.

Process(es):

Illustrated the intensity of the lights and shadows to portray the exposure of her skin as horrific.





## Work 4

Selected Works

Height: 10

Width: 16

Idea(s):

This scene from the film *Moonlight* symbolizes my struggle with sexual identity and home life.

Materials:

Graphite pencils, black colored pencils, and white gel pen on paper.

Process(es):

Light layers built the mid-tones and heavier layers in the darkest areas.



## Work 5

Selected Works

Height: 48

Width: 36

Idea(s):

The X-ray inserts encourage the viewer to interact with the piece to find what is being revealed.

Materials:

Oil paint and acrylic paint on canvas.

Process(es):

Layers of acrylic and oil paint built the cold and lonely atmosphere to complement the curled body.